



ID READER **FIXED-MOUNTED** **AND HANDHELD**

FOR INDUSTRIAL
AUTOMATION

 **di-soric**

IDENTIFICATION SOLUTIONS FROM DI-SORIC

There is an increasing demand for the use of identification systems in modern automatic conveyor and production systems.

The essential characteristic of new production concepts is linking the information flow with the material flow. This enables the identification of the conveyor units at any time and at any location, ensuring flexible control at each production step.

However, this requires the reliable detection of all common 1D and 2D codes.



Code 39



Code 128



Code 2 of 5 Interleaved



1D or barcodes

- Vertical arrangement of information
- Lines/Spaces in between are measured and converted into the information contained therein
- Extra wide distribution of codes
- 'Print growth' is very critical for readability
- A lack of correction options makes checks difficult
- Can be read using camera- or laser-based methods

Code UPC



EAN code



PDF 417



Aztec



QR code



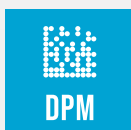
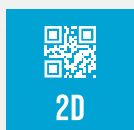
2D or stacked barcodes

Barcode

- Error correction to stabilize the readability in case of damage
- Can be read using camera- or laser-based methods
- Requires a very high print quality

Matrix code

- Standard from Nippon Denso
- 4 selectable levels of error correction
- Makes reconstruction possible for 7% - 30% damage



Data Matrix Code – DPM

- The standard for product tracing
- DPM: With Direct Part Marking, the code is added directly to the product without a label - also to increase counterfeit protection - e.g. needle-embossed or laser-engraved.

The advantages of our identification solutions

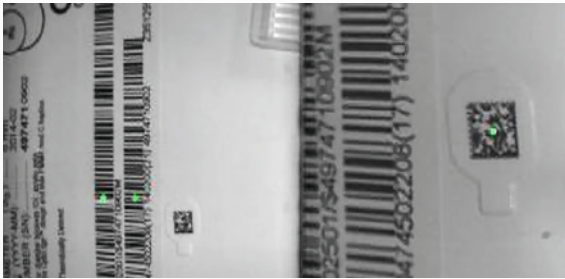
Enables you to identify all codes quickly and easily – near and far, large and small, damaged and dirty codes on challenging, shiny or transparent surfaces, even on the screens of mobile devices – with superior accuracy, reliability and speed. Mobile and stationary.



POWERED BY
**CORTEX
DECODER®**

CortexDecoder

Our ID reader is based on CortexDecoder software, which offers the most advanced decoding algorithms in the industry, thus making it the fastest, most accurate and most innovative barcode scanning software on the market.

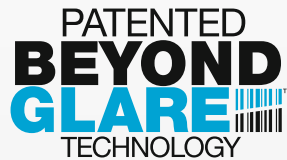


Dual Field Optics – Twice as good

Scanning using dual field optics ensures that your work process is not interrupted by frequent adjustments to the scanning position. This technology offers two lens systems with overlapping scanning fields - one is configured for small barcodes and one is configured for large barcodes. The near and far scanning of large or small codes enables you to scan everything that you need.

Beyond Glare – Shiny objects are not a problem

The decoding process is improved via the high contrast display of barcodes - the patented Beyond Glare technology ensures fast processes and high accuracy worldwide.



Near Zero Miss Accuracy

Our Near Zero Miss reader outperforms the competition - not just in tests, but also in practice - with its industry-leading scanning accuracy: Only 1 of 2000 barcodes is read incorrectly. In a special practical test using creased plastic and reflecting barcodes that move by the ID reader at a speed of 15 cm per second, the results were more than acceptable.

JavaScript – Logic and flexibility

The code reader based on a JavaScript platform can be quickly programmed with logic to prepare and adapt it for integration into any industry solution.

```
rules_onDecode = function(decode)
{
    if(decode.data.match(/^01[0-9]{2}88[0-9]{10}$/))
    //di-soric parsing
    {
        decode.data = decode.data.substring(4,-2);
    }
    return decode;
}
```

IDENTIFICATION SOLUTIONS

FIXED-MOUNTED AND HANDHELD ID READERS

In a production environment, identification solutions are required for the identification and localization of parts, product carriers, products, packaging, etc. from incoming goods to final shipping. di-soric offers camera-based code readers for reading 1D and 2D codes for these kinds of applications.

ID-10 or ID-80

Easy to operate and fast,
reliable data recording

These light and compact automatic scanners read and decode 1D and 2D codes in all less challenging process environments for an accelerated, stable process.



		Page
ID-10 Compact	Highly compact fixed-mount or handheld ID reader with a high reading performance	6
ID-80 Standard	Light and compact handheld ID reader	7

ID-100 or ID-200

Industrial-quality data recoding – DPM included

In an industrial environment, the ID handheld systems from di-soric are the first choice - from the lightweight to the extremely robust ID reader made of aluminum.

The ID-100 and ID-200 handhelds also read and decode 1D and 2D codes in challenging process environments for an accelerated, stable process with maximum reliability.





ID-200				
 1D	 2D	 PDF	 POSTAL	 DPM





ID-100				
 1D	 2D	 PDF	 POSTAL	 DPM

		Page
D-100 Advanced	Industrial-quality DPM reader	8
ID-200 Hammer	DPM reader with the highest industrial quality	9
	Technical data / Accessories	10 / 11

OUR FLEXIBLE ID-10 COMPACT

The ID-10 is a cabled barcode reader with very compact dimensions and a high level of reading performance.

The dual field optics enable the user to quickly scan both wide 1D barcodes and small, dense 2D barcodes. Users can use the ID-10 as a handheld or mounted in a fixed manner and choose for a high degree of efficiency between continuous scanning or moving detection.

For fixed mounting, the ID-10 has threaded brass inserts for simple installation. With its high speed, omnidirectional code reading, extremely low energy consumption and manual or automatic resolution, the ID-10 is the ideal barcode reader for environments with a high degree of utilization, and distinguishes itself through high decoding performance and a very attractive price/performance ratio.



- **Fast, reliable code reading**
Reliable omnidirectional detection of 1D codes, 2D codes and postal barcodes ¹
- **Flexible application**
Manual or automatic trigger
- **Stationary application as a fixed-mount:**
Minimal space requirement due to compact dimensions and extremely low power consumption
- **Mobile application as a handheld:**
Fatigue-free work through low weight and easy-to-handle format
- **Clear reading feedback**
via LED and audible tone
- **Flexible data processing**
Data processing and parsing with JavaScript



Applications

Stationary code reading in production lines with continual scanning or motion detection

Code reading

- In production lines
- In goods receiving
- For warehousing
- For commissioning
- In outgoing goods
- During assembly



OUR LIGHTWEIGHT OPTION

ID-80 STANDARD

The ID-80 is a lightweight and compact barcode reader which quickly decodes 1D and 2D codes.

Thanks to its ergonomic design, it can be operated comfortably over long periods of time. This feature and its long service life make it a reliable investment.

The easy-to-operate code reader exceeds one-line laser scanners and linear imagers with complete, omnidirectional barcode reading. In combination with its multifaceted programmability, the ID-80 transfers coded data quickly and reliably into any enterprise solution.



- **Fast, reliable code reading**
Omnidirectional detection of 1D codes and 2D codes ¹
- **Flexible applications**
Mobile or stationary with manual or automatic trigger
- **Fatigue-free work**
due to low weight and an ergonomic design
- **Clear reading feedback**
via LED and audible tone



Applications

Anywhere 1D and 2D codes need to be read under challenging conditions

Code reading

- In goods receiving
- For warehousing
- For commissioning
- In outgoing goods
- During assembly



¹ Page 14 contains an overview of all supported code types

OUR INDUSTRIAL-SIZED VERSION

ID-100 ADVANCED

The ID-100 is an industrial-quality DPM reader for all types of codes.

The device effortlessly reads lasered, imprinted, dotted, low-contrast and postal codes and decodes dense and extremely small barcodes. Equipped with several light fields, the ID-100 automatically selects the field that is most efficient in reading the respective code type. This leads to quick data detection of surfaces that are difficult to read, even in case of damaged and contaminated codes.

The ID-100 is ideally suited for component tracking on assembly lines and other manufacturing applications.



- **Fast and reliable decoding**
using dual zone optics despite fluctuating working distances
- **Excellent DPM code decoding**
Automatic adjustment of the illumination to the type, quality and size of the DPM codes
- **Able to read every kind of 1D and 2D codes¹**
as well as colored and low-contrast as well as damaged ones
- **Fatigue-free work**
due to low weight and an ergonomic design
- **Unique read feedback**
by means of LED, audible sound, and vibration
- **Flexible data processing**
Data processing and parsing with JavaScript

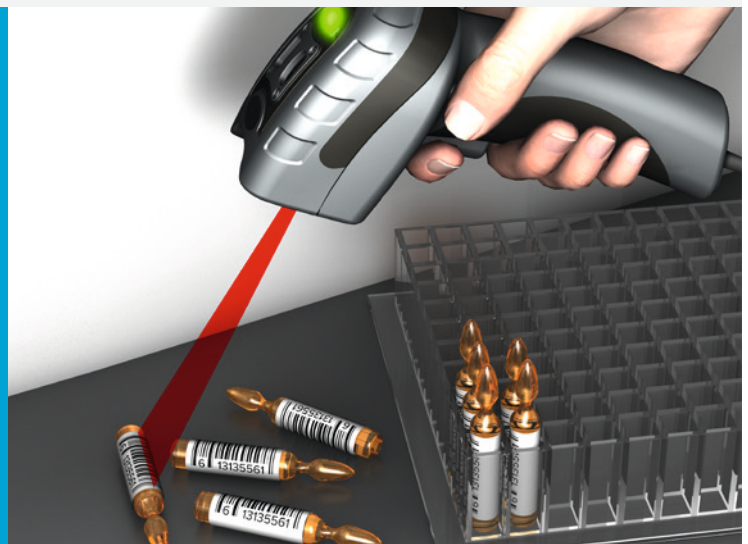


Applications

For component tracing where direct mark codes are frequently used.
On assembly lines.

Code reading

- During assembly
- In goods receiving
- For warehousing
- For commissioning
- In outgoing goods



OUR ROBUST VERSION

ID-200 HAMMER

The ID-200 is a DPM reader of the highest industrial quality for all types of codes.

It decodes engraved, stamped and needle-embossed codes, postcodes, low-contrast, extremely dense and small barcodes. With its internal illumination options and dual zone lens, the ID-Hammer intelligently selects the right setting for every code. It reads even damaged, blurred, contaminated or dirty codes reliably.

The ID-200 is perfectly suited under adverse ambient conditions for component tracking on assembly lines and other manufacturing applications.



- **Durable and a safe investment**
The unique housing made of light aluminum withstands even the roughest ambient and usage conditions, including the solid trigger sensor and the M12 connection
- **Fast and reliable decoding**
using dual zone optics despite fluctuating working distances
- **Excellent DPM code decoding**
Automatic adjustment of the illumination to the type, quality and size of the DPM codes
- **Able to read every kind of 1D and 2D codes¹**
as well as colored and low-contrast as well as damaged ones
- **Can be set up / used for ESD-sensitive applications**
using ESD-compatible accessories
- **Unique read feedback**
using programmable LED, audible tone and vibration
- **Flexible data processing**
Data processing and parsing with JavaScript



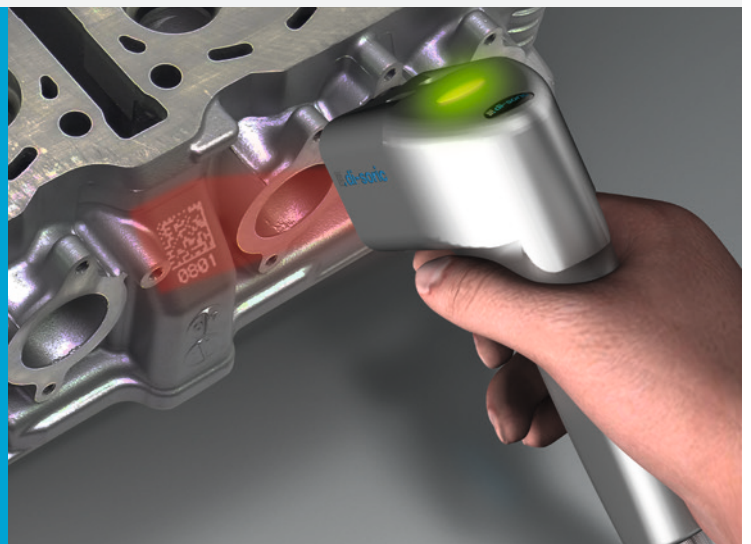
Applications

For component tracing in rough environments and those prone to contamination, where directly marked codes are used in particular.

On assembly lines and in other production applications.

Code reading

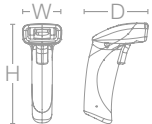




- In assembly / production
- In goods receiving
- For warehousing
- For commissioning
- In outgoing goods



¹ Page 14 contains an overview of all supported code types

TECHNICAL DATA

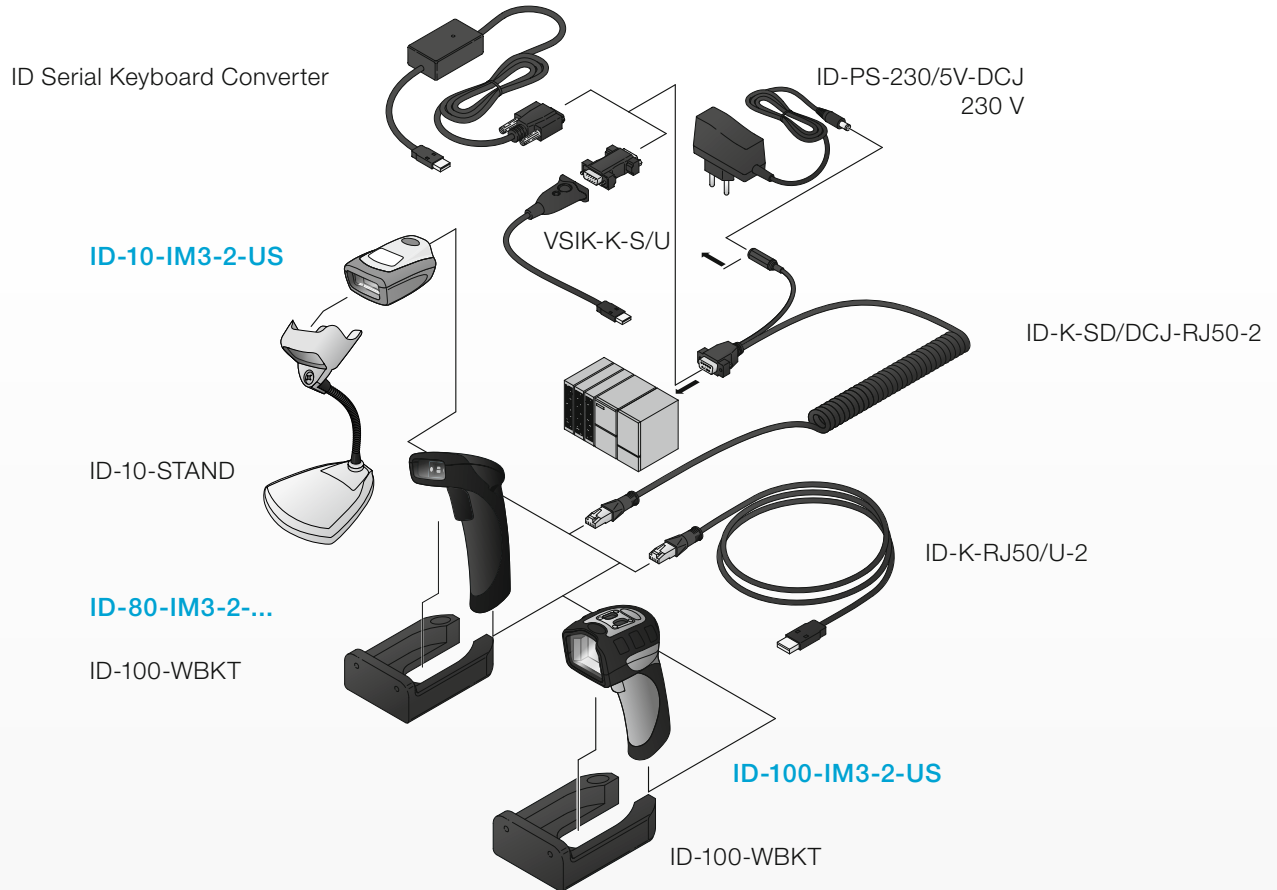
ID-10, ID-80, ID-100 AND ID-200

ID reader	ID-10 ID-10-IM3-2-US	ID-80 ID-80-IM3-2-S ID-80-IM3-2-U	ID-100 ID-100-IM3-2-US	ID-200 ID-200-IM3-2-US
				
Housing dimensions H x W x D	29 x 49 x 67 mm	142 x 51 x 85 mm	160 x 49 x 75 mm	174 x 56 x 95 mm
Housing material	Plastic	Plastic	Plastic	Aluminum
Weight	55 g	110 g	130 g	578 g
Interfaces	<ul style="list-style-type: none"> • RS232 (in operation with ID-K-SD/DCJ-RJ50-2) • USB-A (operation with ID-K-RJ50/U-2) 	<ul style="list-style-type: none"> • RS232 (in operation with ID-K-SD/DCJ-RJ50-2) • USB-A (operation with ID-K-RJ50/U-2) 	<ul style="list-style-type: none"> • RS232 (in operation with ID-K-SD/DCJ-RJ50-2) • USB-A (operation with ID-K-RJ50/U-2) 	<ul style="list-style-type: none"> • RS232 (in operation with ID-K-SD/DCJ-M12-X) • USB (in operation with ID-K-M12/U-2)
Connection	RJ 50	RJ 50	RJ 50	Connector, M12, 12-pin
Service voltage	5 V DC	5 V DC	5 V DC	5 V DC
Resolution	960 x 640 pixels	1,280 x 960 pixels	1,280 x 960 pixels	1,280 x 960 pixels
Position scanner to code	Tilt 180°, Pitch ± 65°, Skew ± 60°	Tilt 180°, Pitch ± 65°, Skew ± 60°	Tilt 180°, Pitch ± 65°, Skew ± 60°	Tilt 180°, Pitch ± 65°, Skew ± 60°
Ambient temperature during operation	-20 to +55 °C	-20 to +50 °C	-20 to +55 °C	-20 to +55 °C
Operating ranges*	20 – 300 mm	30 – 400 mm	0 – 200 mm	0 – 200 mm
Functional scope				
1D codes (barcodes)	Code 11 Code 32 Code 39 Code 93 Code 128 Interleaved 2 of 5 GS1 DataBar BC 412 Codabar IATA 2 of 5 Hong Kong 2 of 5 Matrix 2 of 5 MSI Plessey NEC 2 of 5 Pharmacode Plessey Straight 2 of 5 Telepen Trioptic UPC / EAN / JAN	Code 11 Code 32 Code 39 Code 93 Code 128 Interleaved 2 of 5 GS1 DataBar BC 412 Codabar IATA 2 of 5 Hong Kong 2 of 5 Matrix 2 of 5 MSI Plessey NEC 2 of 5 Plessey Straight 2 of 5 Telepen Trioptic UPC / EAN / JAN	Code 11 Code 32 Code 39 Code 93 Code 128 Interleaved 2 of 5 GS1 DataBar (RSS) BC 412 Codabar IATA 2 of 5 Hong Kong 2 of 5 Matrix 2 of 5 MSI Plessey NEC 2 of 5 Pharmacode Plessey Straight 2 of 5 Telepen Trioptic UPC / EAN / JAN	Code 11 Code 32 Code 39 Code 93 Code 128 Interleaved 2 of 5 GS1 DataBar (RSS) BC 412 Codabar IATA 2 of 5 Hong Kong 2 of 5 Matrix 2 of 5 MSI Plessey NEC 2 of 5 Pharmacode Plessey Straight 2 of 5 Telepen Trioptic UPC / EAN / JAN
2D codes	Data Matrix Data Matrix Rectangular Extension QR Code Micro QR Code QR Model 1 Aztec Code Han Xin Maxi Code	Data Matrix Data Matrix Rectangular Extension QR Code Micro QR Code QR Model 1 Aztec Code GoCode® (protected - additional license required)	Data Matrix (ECC 0-200) QR Code Micro QR Code Aztec Code Code 49 Codablock F Han Xin Maxi Code	Data Matrix (ECC 0-200) QR Code Micro QR Code Aztec Code Code 49 Codablock F Han Xin Maxi Code
Stacked codes	PDF 417 Micro PDF GS1 Composite (CC-A/CC-B/CC-C) Codablock F Code 49 Grid Matrix	PDF 417 Micro PDF GS1 Composite (CC-A/CC-B/CC-C)	PDF 417 Micro PDF 417 GS1 Databar (Composite & Stacked) GS1 Composite (CC-A/CC-B/CC-C) Codablock	PDF 417 Micro PDF 417 GS1 Databar (Composite & Stacked) GS1 Composite (CC-A/CC-B/CC-C) Codablock

ACCESSORIES FOR ID READERS

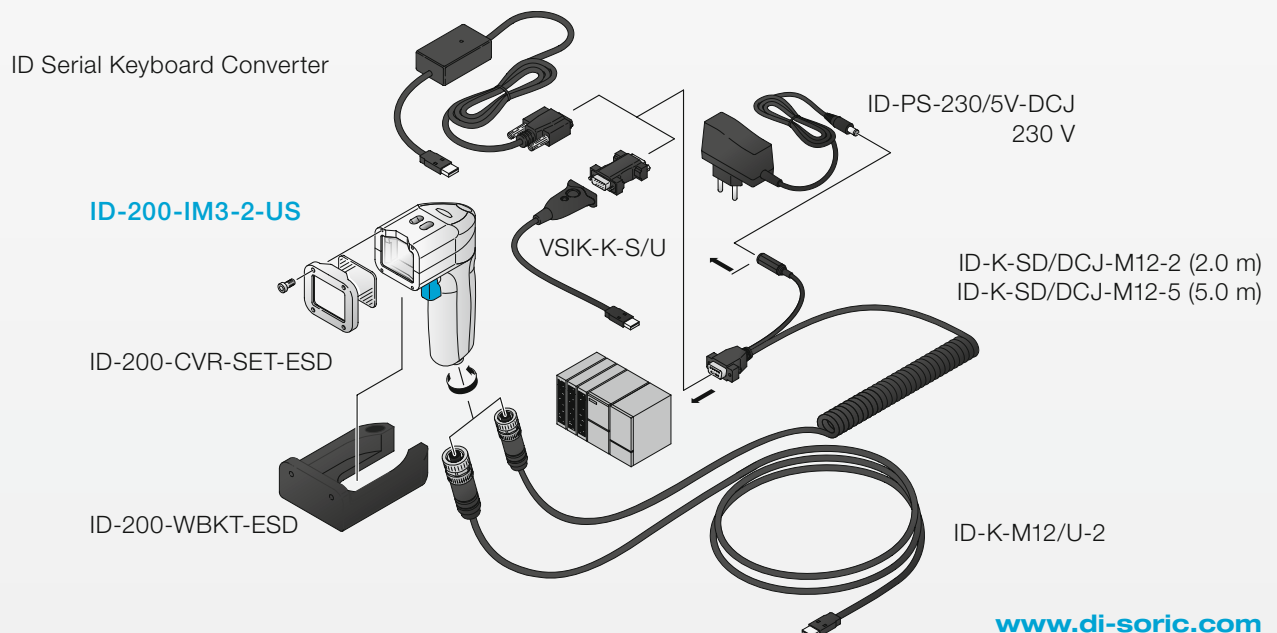
ID-10 / ID-80 / ID-100

All accessories can be used for all three ID readers - except for the stand of the ID-10 and the brackets (ID-100-WBKT).



ID-200

For protecting against electrostatic discharges (ESD) and for connecting the ID-200 with an industrial M12 plug connector to serial or USB interfaces.



SOLUTIONS. CLEVER. PRACTICAL.

di-soric Headquarters

Germany: di-soric GmbH & Co. KG | Steinbeisstrasse 6 | 73660 Urbach
Phone +49 71 81 98 79-0 | Fax +49 71 81 98 79-179 | info@di-soric.com

di-soric Subsidiaries

Austria: di-soric GmbH & Co. KG | Phone +43 7228 72 366 | info.at@di-soric.com

France: di-soric SAS | Phone +33 476 61 65 90 | info.fr@di-soric.com

Singapore: di-soric Pte. Ltd. | Phone +65 6694 7866 | info.sg@di-soric.com

The Netherlands: di-soric B.V. | Phone +31 413 33 13 91 | info.nl@di-soric.com

For further information visit www.di-soric.com/international

www.di-soric.com